



Sky Ranch's Mission is to Facilitate an Encounter with Christ on the Mountaintops

- To unfold the gifts of all participants
- To challenge beyond the comfortable
- To gift our community with diversity
- To be fertile soil for the seeds of faith
- To embrace changing needs
- To preserve our environments
- To build up positive leadership
- To celebrate with inspiration and joy

ANNUAL MEETING AGENDA

Welcome

Prayer

Introduction of Board & Staff

Reports

Board President

Treasurer

Staff

Appeal Update – Executive Director

Recognition

Rob Behrens

Kevin Dragseth

Jeff Kelty

New Board Members

Ruth Ann Loughry

Kim Kelty

Thank You's

Closing Prayer

SKY RANCH LUTHERAN CAMP 2014 ANNUAL REPORT

BRAD ABBOTT – EXECUTIVE DIRECTOR

2014 was another incredible year in the life of Sky Ranch with over **3,000 lives impacted by this ministry**. We continue to build upon the success of the past few years to increase campers, reduce debt, and reclaim our legacy for service learning opportunities and for training leaders for the church.

Increased Campers: Camper numbers were up again last summer, **servicing over 300 more campers than the previous year**. Much of this increase was from our Backpacking and Four Winds Service Programs for high school campers. Camps continue to be one of the few places in our church where youth remain active after confirmation. Sky Ranch served 1,158 campers and staff in summer programs, 388 in Day Camp programs, 135 in fall confirmation retreats, 1,046 participants in other retreats, over 180 volunteers onsite and 161 single day volunteers with flood relief. **That's over 3,068 lives impacted!**

Debt Reduction: For the third year in a row Sky Ranch has maintained a balanced Budget. The 50th Anniversary Special Appeal has raised an additional \$430,000 in gifts and pledges towards its goal of \$550,000. While most of these funds will be used to replace the current shower house, \$75,000 is designated exclusively towards debt reduction.

Service Learning: Sky Ranch continues to reclaim its heritage of service learning opportunities through an expanded Four Winds Service Program this year. In response to the devastating floods of 2013, Sky Ranch partnered with local congregations and agencies to meet the needs of the Longmont/Lyons



communities and its victims. **The Sky Ranch Flood Relief Program had almost 400 individuals contribute over 8,350 hours of volunteer service and over 1,300 volunteer service days last summer**; this is in addition to another 4,800 hours of volunteer service through other Four Winds Service Programs offered at Sky Ranch.

Leadership Training: Camp is one place people in their late teens and 20s remain active in their faith life. Dynamic college-age counselors ignite the faith of children and youth and are inspired in their own faith. Sky Ranch has a rich tradition of training summer staff to be church leaders and has six former staff currently in seminary. From last summer's staff alone, Sky Ranch has one in seminary, two are serving as Youth & Family Directors in congregations, and three are serving with the ELCA Young Adult Global Missions (two in Rwanda and one in Madagascar).

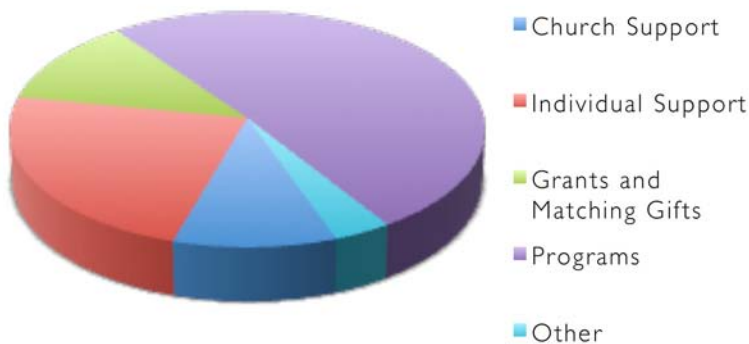
To the 50 young Christian adults who heeded God's call of service last summer at Sky Ranch, **"Thank you!"** Your faith and your work in this ministry are amazing! (Continued page 3)

2012 - 2015 BUDGET COMPARISON

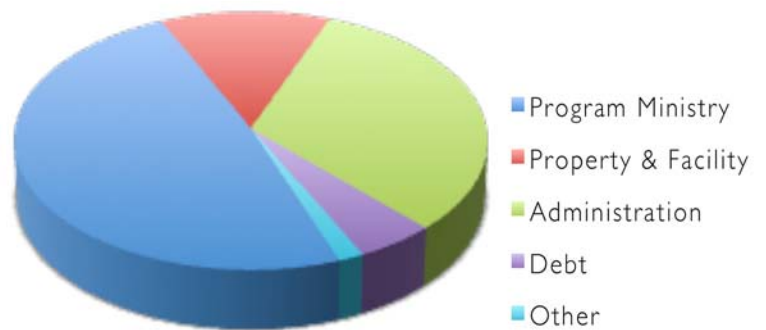
| | Budget 2015 | Actual 2014 | Budget 2014 | Actual 2013 | Actual 2012 |
|-------------------------|---------------------|---------------------|---------------------|---------------------|---------------------|
| Income | | | | | |
| Church Support | \$64,950.00 | \$57,688.49 | \$64,950.00 | \$67,086.09 | \$68,641.00 |
| Individual Support | \$149,000.00 | \$148,533.96 | \$145,000.00 | \$161,183.49 | \$197,525.00 |
| Grants & Matching Gifts | \$76,500.00 | \$76,459.66 | \$80,500.00 | \$84,015.65 | \$103,604.00 |
| Program | \$325,500.00 | \$443,529.36 | \$312,000.00 | \$320,269.99 | \$242,223.00 |
| Other | <u>\$23,000.00</u> | <u>\$22,581.40</u> | <u>\$23,000.00</u> | <u>\$18,668.16</u> | <u>\$35,479.00</u> |
| Total Income | \$638,950.00 | \$748,792.87 | \$625,450.00 | \$651,223.40 | \$647,472.00 |
| Expenses | | | | | |
| Program Ministry | \$311,362.00 | \$378,624.60 | \$307,205.00 | \$310,369.52 | \$239,939.00 |
| Property & Facility | \$81,000.00 | \$90,482.09 | \$66,500.00 | \$76,731.85 | \$62,785.00 |
| Administrative | \$203,880.00 | \$210,423.51 | \$189,591.00 | \$185,263.70 | \$204,097.00 |
| Other | \$10,000.00 | \$7,795.36 | \$14,000.00 | \$14,449.44 | \$7,964.00 |
| Interest on Debt | <u>\$32,000.00</u> | <u>\$33,636.36</u> | <u>\$45,000.00</u> | <u>\$41,224.52</u> | <u>\$57,532.00</u> |
| Total Expenses | \$638,742.00 | \$720,961.92 | \$622,296.00 | \$627,582.27 | \$572,317.00 |
| Gain/Loss Total | \$208.00 | \$27,830.95 | \$3,154.00 | \$23,641.13 | \$75,155.00 |



Where Our Money Comes From . . .



Where Our Money Goes . . .



ANDY SPRAIN – ASSOCIATE DIRECTOR

Annual reports present a bit of a conundrum. In most ways they serve as a nice year *in review*. Except that as of the last day of camp, my gaze turns the next. Meaning for the last eight months I have solidly looked forward – next summer's groups, next summer's theme, next summer's staff, next summer's adventures. After investing so much in the future, it is hard to pivot to look back.

So I will leave my fellows to review 2014; I want to talk about 2015. In particular, I want to share the moments, as yet undefined, that I most look forward to:

- Witnessing cabin after cabin of strangers discover their differences, honor them, yet still leave as friends.
- Walking on the far side of camp, south of the river, only to have the sounds of laughter and the joy of camp float through the trees.
- The connection that comes when creation isn't simply experienced through technology's prism.
- Watching the summer staff's nervousness on the first day of staff training build to confidence and ultimately exuberance while getting
- to do ministry with kids.
- Family style meal service, especially meals with herbs and vegetables grown in our garden and greenhouse.
- The surprise that comes when the elation and generosity of campers blossom as they are welcomed as Christ into intentional community.
- Worship services of all varieties, especially those led by the spontaneity of campers.
- The excitement of campers and staff when they discover their own story within the summer's theme, conversation, and Bible study.

- Realizing as such a widely dispersed community adopts a life orientation of service that the Kingdom becomes present, even as it is to come.
- Being present when life is real enough to bring tears but also laughter.

Camp (and life) is made of moments such as these. They are how faith is caught and passed. They make love and hope, grace and promise real. They are what transform our campers, our guests, our staff, our world. These moments are (for me, at least) Sky Ranch. I pray that as it was in 2014, may it be in 2015 and for many years to come. Thank you to all who make these moments possible.



EXECUTIVE DIRECTOR – Continued

Along with Andy, Kathryn, and Ally, this camp is truly blessed. It is a privilege to serve and share alongside them.

Yes, 2014 was an amazing year! This increased use means we were able to minister to more lives but it also presents some financial and staffing challenges. Camper fees only cover about 70% of what it actually costs for a child to attend summer camp. The supportive contributions of member congregations and the generous giving of the many individuals listed in this report make up this difference. **Thank you!**

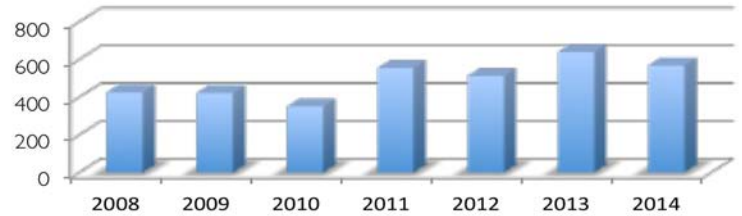
In Sky Ranch, God has entrusted a vibrant Gospel centered program and 117 acres of mountaintop creation to our care. As we look forward to 2015, the Board will be developing a strategic plan looking to craft a fiscally sustainable ministry able to meet growing demands on our site and staff. We invite your input and support. **Camp works because it's a relational ministry.** Camp continues because generous donors believe it's worth their investment. Through your support and involvement, Sky Ranch will be strengthened for generations to come.



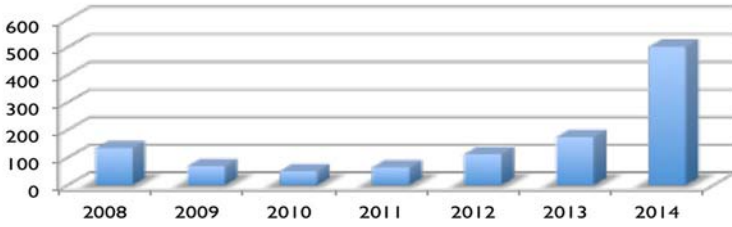
2014 CAMPER REGISTRATION

2014 marks the fourth year in a row of increases in our overall program participation. This includes an 18% increase in Traveling Day Camp and almost three times as many high school campers in 2014 as in 2013. It hasn't been since 2001 that so many campers participated in Sky Ranch programming!

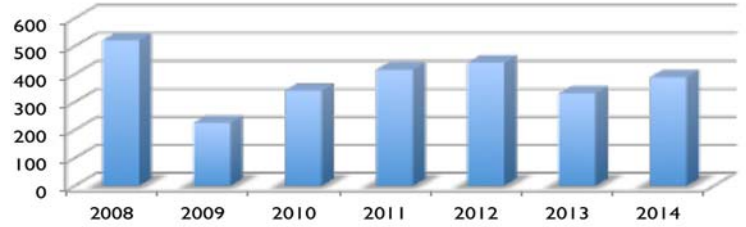
Main Ranch Programs



High School Off Site Programs



Traveling Day Camp Programs



2014 SUMMER STAFF

| | | | | | |
|---------------------|---------------------|-------------------------------------|------------------|---------------------|--|
| Caitlin Almer | Littleton, CO | Luther College | Liz Jones | Parker, CO | University of Denver |
| Hannah Anderson | Kalspell, MT | Pacific Lutheran University | Joe Kiel | Columbia, SC | Midlands Technical College |
| Kimberly Belleville | Fort Collins, CO | Pacific Lutheran University | Colt Luedtke | Hampshire, IL | Carthage College |
| Donna Berardinelli | Albuquerque, NM | New Mexico State | Julio Mandujano | Greeley, CO | University of Northern Colorado |
| Sarah Bibbey | Laporte, CO | Colorado State University | Lauren Mendez | Auburn, WA | Pacific Lutheran University |
| Jenny Bonnell | Apple Valley, MN | Luther College | Ally Miller | Granville, IL | Illinois State |
| Matt Borchart | Savage, MN | Luther College | Andrea Mondragon | Greeley, CO | Grad - University of Northern Colorado |
| Kenneth Bouman | Cincinnati, OH | Valparaiso University | Meagan Murphy | Johnsburg, IL | Augustana - Rock Island |
| Rachel Brooks | Evergreen, CO | Luther College | Alysha Newsom | Stanchfield, MN | Carthage College |
| Kadie Butteris | Barneveld, WI | University of Wisconsin - Madison | Siri Olsen | Fort Collins, CO | Pacific Lutheran University |
| Drew Churchill | Eden Prairie, MN | Mankato State University | Joey Petrillo | Bloomington, IL | Heartland Community College |
| DeAira Cooper | Lynwood, IL | Colorado College | Luke Rein | Littleton, CO | Colorado State University |
| Andrew Coulter | Caster Valley, CA | San Diego State University | Megan Sawyer | Fort Collins, CO | Grad - Luther College |
| Lisa Dunworth | Fort Collins, CO | Grad - Colorado State University | Zack Schranck | Castle Rock, CO | University of Northern Colorado |
| Emily Ebert | Columbus, OH | Trinity Lutheran Seminary | Nate Smith | Alma, MI | Carthage College |
| Elyssa Eull | St Michael, MN | Luther College | Taylor Sommers | Rozemount, MN | Gustavus Adolphus College |
| Jeff Fairfax | Orlando, FL | University of Central Florida | Erika Storvick | Woodbury, MN | Luther College |
| Joel Freeman | Loveland, CO | University of Northern Colorado | Joel Stremmel | Brookings, SD | Gustavus Adolphus College |
| Karley Gosselin | Grafton, WI | University of Wisconsin - Madison | Maddie Thomas | Delta, OH | Grad - Adrian College |
| Taylor Grooms | Wert, OH | University of Cincinnati | Alison Vuolo | Eden Prairie, MN | Luther College |
| Kelsey Gustaveson | Boone, NC | Grad - University of North Carolina | Tommy Wangaard | Eden Prairie, MN | Regis University |
| Luke Hanson | Brookings, SD | Grad - Luther College | Nicci Watson | Fort Worth, TX | Texas A&M |
| Toky Hardy | Madagascar | ELCA International Staff Program | Taylor Wiese | Bloomington, IL | Valparaiso University |
| Julia Jaecks | Denton, TX | Grad - University of North Texas | Ally Williams | Highlands Ranch, CO | University of Northern Colorado |
| Hailey Johnson | Highlands Ranch, CO | Luther College | Erich Zeddies | Chicago, IL | Grad - Colorado State University |

KATHRYN SEYFARTH – PROGRAM DIRECTOR

Every summer we ask our campers and guests, “How are you going to take your experience down the mountain?” It’s a question that all those who experience camp struggle with when their camp reality begins to collide with their life down the mountain. It’s a simple question. But how do you take a life-altering experience in an intentional Christian community ... down the mountain? How do you explain it to those who haven’t experienced what you have? What does “taking” it down the mountain even mean? As a culture, we yearn for an instructional manual or some simple bullet points on how to navigate questions such as these. Yet the answer is always the same ... the experience is unique to you and in time you will find the way to share your story with those around you.

When someone asks us, “How was your time at camp?”, our inclination is to tell rather than act. We try to sum up the community, the worships, and the faith conversations into one 30-second elevator speech all while trying to get those we’re speaking with to understand and feel the experience that we felt. What if, instead of telling, we lived into it. We

took the love, we took the community, we took the overflowing undeserved Grace that God continuously gives us and share that with one another and immerse it through everything we do? Of course we’ll have moments of relapse but those are opportunities to call on our community to remind us of our experience.

It’s difficult to “act” in an article. Instead of sharing bullet point facts, I will share with you an example of taking it down the mountain. Meagan Murphy worked for us this past summer and will join us again on leadership staff for the summer of 2015. She reflects on the struggle of taking it down the mountain and how she has taken her experience from words to actions:

“Sky Ranch is a part of who I am. When people ask me about my time there, I need not feel restrained by the length of my response or number of my pictures, or the ability and readiness to share with them clear, concise learning moments. But rather, I should be comforted with the understanding that Sky Ranch has been integrated into my story, shown through an overflowing of God’s grace



and love that I can share with the world. This is bringing what I learned at Sky Ranch down the mountain, and this is what I strive to do every day.”

I encourage you all to take your personal experiences from last summer or summers before and be comforted with the knowledge that “Sky Ranch has been integrated into your story”; continue to live into that story.

We are blessed with each person we come in contact with through the Sky Ranch ministry. It is the compulsion of these stories, this community, where the kingdom of heaven is realized. Blessings on your summer to come and we hope to see you at camp!

ALLY PLUCHECK – OFFICE MANAGER

Weekend retreats are a great experience for that first time camper testing the water of the camp experience or the congregation that bonds in a place set apart or the adventurous family needing that getaway time together. Weekend Retreats are a big part of our summer programming and a very vital part of who Sky Ranch is. Weekend Retreats invite congregations and individuals to be a part of this ministry, to Encounter Christ on the Mountaintops.

Throughout the summer months of 2014, we had over 1,046 guests join

us from all along the Front Range like Mount Calvary Boulder, Shepherd of the Hills Fort Collins, Christ in Highlands Ranch, Our Savior’s Greeley, Our Saviour’s Fort Collins, Holy Shepherd Lakewood, and St Peter Fort Collins.

We had congregations that not only came up to spend time together, but also donated their time and service with volunteer projects. We give a big thanks to Holy Cross, Wheat Ridge; Bethlehem, Longmont; Shepherd of the Valley, La Salle; First Lutheran, Longmont; and Bethany, Denver. We

had a new congregation, River of Life from Loveland, bring almost their whole congregation up. Spirit of Joy from Fort Collins invited their entire congregation to join in worship up at Sky Ranch. For Fourth of July, the campground was completely full with families from near and far.

Sky Ranch is a special place. It is a place for community, it is a place for faith, it is a place for growth. We are very grateful for the partnerships of these congregations and look forward to the new relationships we will encounter!

SKY RANCH 50TH ANNIVERSARY SPECIAL APPEAL

The Board of Directors of Sky Ranch approved a \$550,000 50th Anniversary Special Appeal. This appeal started in the fall of 2013 in Northern Colorado and spread to the rest of Colorado and beyond during 2014.

Because of the generous response from individuals and congregations to the 50th Anniversary Special Appeal, the Sky Ranch Board of Directors unanimously **voted at its August meeting to move ahead with the shower house construction project.** Based on \$330,000 in pledges and cash received at that point, the board felt confident they will have the remainder of funds needed by the time the shower house is completed in the spring of 2015.

We currently have \$433,000 in pledges and gifts towards our goal of \$550,000!

While we continue to build our annual fund with gifts of all sizes, the Special Appeal is seeks gifts of \$5,000 or more over a two to three year period. The goal will provide funding to replace the shower house and to reduce the camp's overall debt.

With the increasing camper numbers over the past four years (up 30% again this summer), the current shower house is inadequate. The shower house was built as a temporary structure over 30 years ago. This facility is the most-utilized building on site, and is no longer sufficient to serve the numbers of campers and adults currently using Sky Ranch.

Troy Jones of MTA Planning and Architecture and Gary Hale of Thunderpup Construction are overseeing design and construction of the new shower house and its infrastructure. Infrastructure includes replacing the incoming water line, the drain field and the

power coming into the building. Because of the limited construction season at camp, the building is being constructed in two sections by Heritage Homes of Wayne, Nebraska. The sections are being built this winter and will be moved up to camp in the spring. Demolition of the current shower house was delayed this fall due to early snows but will start in April of 2015 and site preparation will begin. Once the structures arrive at camp it will only take a few days to set them on the foundation and tie them together. During construction, the camp will continue to host retreats without the use of the shower house.

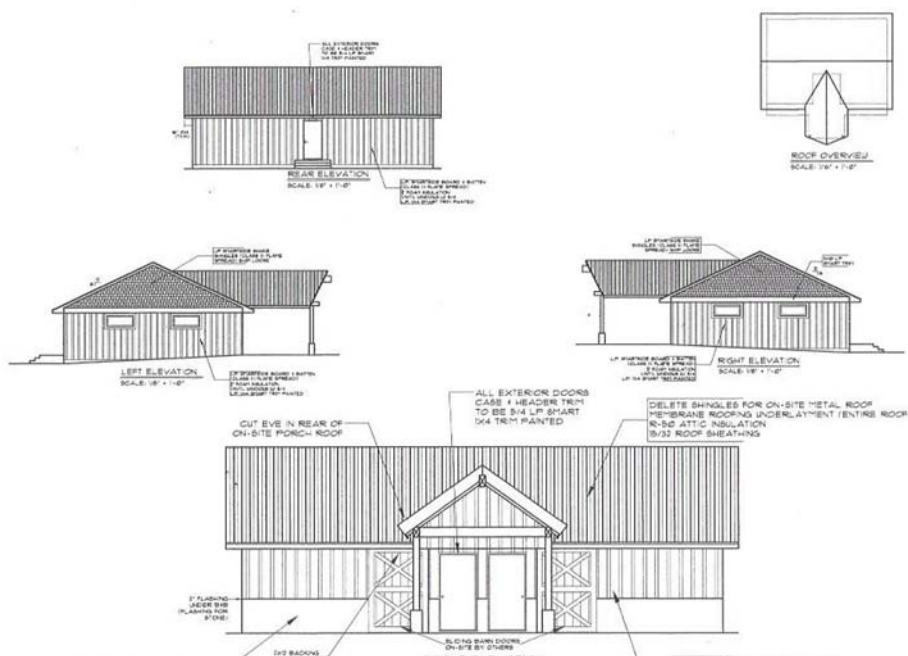
Thank you to all who have gifted or pledged to this appeal. While 80% of the money has been raised, we still have work to do. If you haven't given to the appeal, please consider a gift. With the record stock market, it's a great time to give the gift of stock while you get tax benefits. Together, we will provide a great legacy to the future of Sky Ranch Lutheran Camp.

If you would like more information about

the 50th Anniversary Special Appeal or Sky Ranch's annual fund, please call Brad Abbott at (970) 493-5258 or email brad@skyranchcolorado.org.

Individuals

- Brad & Deb Abbott - Fort Collins, CO
- Meghan & Gabi Aelabouni - Fort Collins, CO
- Don & Janet Anderson - Dallas, TX
- Richard Anderson - Fort Collins, CO
- Rod & Jane Arndt - Fort Collins, CO
- Carl & Connie Backes - Loveland, CO
- Kristen & Rob Baltrum - Longmont, CO
- Rob & Leta Behrens - Fort Collins, CO
- Steve & Lori Berke-Johnson - Longmont, CO
- Ron Bockhaus & Susan Anderson - Estes Park, CO
- William & Kimberly Clouser - Fort Collins, CO
- Dan Cochell - Colorado Springs, CO
- Charles & Marthann Dahlen - Loveland, CO
- Kevin & Katie Dragseth - Aurora, CO
- Gene & Angie Elder - Loveland, CO
- Kent Garvin - Fort Collins, CO
- Ken & Jodi Gibson - Woodstock, IL
- Karlin Gray - Fort Collins, CO
- Kim & Ben Hagestuen - Fort Collins, CO
- Herb & Vicki Hergott - Longmont, CO
- Vicki & Terry Johnson - Loveland, CO
- Paul Judson Family - Longmont, CO
- Jeff & Kim Kelty - Parker, CO



Designs for the exterior of the new showerhouse facility.

APPEAL CONTINUED

Bob & Kim Kuehner - Lafayette, CO
 Dan & Martha Larsen - Fort Collins, CO
 Susane Levine - Davie, FL
 Ron & Linda Letnes - Blaine, MN
 Angie & Tad McDonald - Fort Collins, CO
 Gerry & Delores Mueller - Longmont, CO
 Clayton & Lila Nietfeld - Greeley, CO
 Dana Peterson - Fort Collins, CO
 Ally Plucheck - Fort Collins, CO
 Ralph & Sally Ponfick - Lafayette, CO

Steve & Milenda Powers - Berthoud, CO
 Will & Kathy Reents - Loveland, CO
 R.C. & Kay Reiman - Cheyenne, WY
 Ron Roschke - Denver, CO
 Greg & Susan Schairer - Loveland, CO
 Kathryn Seyfarth - Fort Collins, CO
 Jeff & Pam Snauwaert - Highlands Ranch, CO
 Andy & Erin Sprain - Fort Collins, CO
 Leah Sprain & Matt Haskin - Denver, CO
 Scott & Ruth Sprain - Loveland, CO
 Pam Strawser - Windsor, CO

Roberta Wentworth - Westminster, CO
 Mike & Margaret Williams - Highlands Ranch, CO
 Ralph & Marcia Yernberg - Northfield, MN

Congregations and Organizations

Bethlehem - Longmont, CO
 Christ the Servant Lutheran - Louisville, CO
 Grace Lutheran - Woodstock, IL
 The Estate of Maxine Johnson - Denver, CO
 Trinity Lutheran - Fort Collins, CO
 Zion Lutheran - Loveland, CO

Thank you to Thrivent Financial and all Thrivent members who designated \$28,127 "Thrivent Choice Dollars" to Sky Ranch in 2014.

In the past four years Sky Ranch has received over \$150,000 Thrivent Choice dollars designated from over 300 individuals in 22 different states. Historically this is the most Thrivent Choice money received by any individual organization in the eight state region around Colorado! To all Thrivent members who directed choice dollars our way; **Thank You!** Thrivent Choice Dollars make a **HUGE** impact at Sky Ranch!

All eligible Thrivent members are allocated an amount of money called choice dollars which they can direct to the charitable organization of their choice. Benefit members are those who are currently paying premiums on life insurance, long term disability or long

term care insurance products sold by Thrivent Financial.

Your contributions have allowed Sky Ranch to support children in attending camp by providing camperships and support to children and families. It has also helped us to host no-cost work weekends for groups and individuals, to prepare camp for its summer of ministry. We have been able to explore new ministry opportunities, partnering with congregations and local agencies to minister to victims of the historic floods of 2013 and refugee families in Northern Colorado.

If you are a Thrivent Financial member, we encourage you to continue to designate your Thrivent Choice Dollars to Sky Ranch. If you haven't designated

your Thrivent choice dollars, please consider choosing Sky Ranch (Lutheran Ranches of the Rockies). Each and every gift helps this ministry in powerful ways. Please help spread the word to other Thrivent members.

Current Choice Dollars expire March 31st, so be sure to direct them to Sky Ranch today! If you designated Thrivent Choice dollars to Sky Ranch as a recurring donation, you must renew that designation. If you have any questions about the process call our office at 970-493-5258.

Thank you to our local Thrivent Financial Reps and Fraternal Staff for all they do to support the ministry of Sky Ranch!

CONGREGATIONAL GIVING

Abiding Hope Lutheran Church - Littleton, CO
 All Saint's Lutheran Church - Brush, CO
 American Lutheran Church - Grand Junction, CO
 Ascension Lutheran Church - Cheyenne, WY
 Atonement Lutheran Church - Boulder, CO
 Atonement Lutheran Church - Lakewood, CO
 Bethany Lutheran Church - Cherry Hills Village, CO
 Bethel Lutheran Church - Windsor, CO
 Bethlehem Lutheran Church - Longmont, CO
 Christ Lutheran Church - Highlands Ranch, CO
 Christ the King Lutheran Church - Denver, CO
 Christ the Servant Lutheran Church -
 Louisville, CO
 Cross of Christ Lutheran - Broomfield, CO

Emmanuel Lutheran Church - Goodland, KS
 Faith Community Church - Longmont, CO
 Faith Lutheran Church - Eaton, CO
 First English Lutheran Church - Kimball, NE
 First Evangelical Lutheran Church - Longmont, CO
 First Lutheran Church - Ault, CO
 Glory of God Lutheran Church - Wheat Ridge, CO
 Grace Lutheran Church - Woodstock, IL
 Holy Love Lutheran Church - Aurora, CO
 Holy Shepherd Lutheran Church - Lakewood, CO
 Immanuel Lutheran Church - Bethune, CO
 Lord of the Valley - Granby, CO
 Lutheran Church of Hope - Broomfield, CO
 Lutheran Church of Our Redeemer - Fort

Morgan, CO
 Our Savior Lutheran Church - Greeley, CO
 Our Saviour Lutheran Church - Fort Collins, CO
 River of Life Fellowship - Loveland, CO
 Shepherd of the Hills Lutheran Church - Fort
 Collins, CO
 Spirit of Joy Lutheran Church - Fort Collins, CO
 Spirit of the Mountain Lutheran Church -
 Golden, CO
 St John Lutheran Church - Bird City, KS
 Trinity Lutheran Church - Fort Collins, CO
 Trinity Lutheran Church - Loveland, CO
 Trinity Lutheran Church - Ottawa, IL
 Zion Lutheran Church - Loveland, CO

FRIENDS OF THE MOUNTAIN – GIFTS IN 2014

Camper fees (\$355 in 2014) cover only a portion of what it actually cost to go to camp. How can we do this? Two words: We Can't. Not without your help! Our **Friends of the Mountain** giving club helps to subsidize every camper to the tune of over \$140,000 each year! **Friends of the Mountain** is the organization of people who give leadership support to the Annual Fund through their gifts of \$100 or more during the course of a year. These gifts help us to keep fees within the reach of most people, give campships to those who need them, and help us assure the financial stability of the ministry at Sky Ranch. **Thank You** to these individuals for their support!

Comanche Peak Donors (Above \$1000)

Brad & Deb Abbott - Fort Collins, CO
 Richard Anderson - Fort Collins, CO
 Rod & Jane Arndt - Fort Collins, CO
 Carl & Connie Backes - Loveland, CO
 Rob & Kristen Baltrum - Longmont, CO
 Bob & Elaine Beckman - Fort Collins, CO
 David & Leanne Beety - Vergas, MN
 Cynthia Berger - Highlands Ranch, CO
 Steve & Lori Berke-Johnson - Longmont, CO
 Gail Chester - Athens, GA
 Ken Claiborne - Monument, CO
 William & Kimberly Clouser - Fort Collins, CO
 Ross & Cynthia Cochran - Beemer, NE
 Lucille Cowell - Golden, CO
 Lee & Gayle Currie - Timnath, CO
 Kevin & Katie Dragseth - Centennial, CO
 Gene & Angie Elder - Loveland, CO
 Karla Fossoy & Eric Pabo - Fort Collins, CO
 Kent Garvin - Fort Collins, CO
 Carl Guthals - Aurora, CO
 Ben & Kim Haugestuen - Fort Collins, CO
 Herb & Vicki Hergott - Longmont, CO
 Terry & Vicki Johnson - Loveland, CO
 Paul & Nancy Judson - Longmont, CO
 Wendy Kalan - Sterling, CO
 Jeff & Kim Kelty - Parker, CO
 Marcus Kochis - Colorado Springs, CO
 Bob & Kim Kuehner - Lafayette, CO
 Dan & Marty Larsen - Fort Collins, CO
 Ron & Linda Letnes - Blaine, MN
 Susan Levine - Davie, FL
 Hunter & Janet McDaniel - Boulder, CO
 Mac & Jewel McNamee - Yuma, AZ
 Jon & Ramona McNamee - San Diego, CA

Clayton & Lila Nietfeld - Greeley, CO
 Ralph & Sally Ponfick - Lafayette, CO
 RC & Kay Reiman - Cheyenne, WY
 David & Lucille Rossbach - Saint Francis, KS
 Kirsten & Tom Sauey Hofmann - Hobbs, MN
 Jon & Wendy Sawyer - Fort Collins, CO
 Paul Schairer - Aurora, CO
 Kathryn Seyfarth - Fort Collins, CO
 Danalee & Kirk Simon - Salt Lake City, UT
 Jeff & Pam Snauwaret - Littleton, CO
 Andy & Erin Sprain - Fort Collins, CO
 Scott & Ruth Sprain - Loveland, CO
 Pam Strawser - Windsor, CO
 Bob & Sally Vogel - Denver, CO
 Vera Webster & Jetta Baker - Erie, CO
 Roberta Wentworth - Westminster, CO
 Mike & Margaret Williams - Highlands Ranch, CO
 Hope Wolf - Fort Collins, CO

Crown Point Donors (\$500-\$1000)

Tom and Kristi Aberle - Fort Collins, CO
 Ray and Martha Bailey - Fort Collins, CO
 Rob & Leta Behrens - Wellington, CO
 Ed & Barbara Brandenburg - Brush, CO
 Chuck & Robbie Breaux - Fruita, CO
 Jan Brown - Loveland, CO
 Lee Detterer - Greeley, CO
 Paul & Norma Dirks - Decorah, IA
 Doug & Sandra Grooms - Van Wert, OH
 Mark & Shontelle Hegge - Louisville, CO
 Steve & Mary Kay Helling - Brookings, SD
 David Holen - Denver, CO
 Gary & Mavis Koch - Fresno, CA
 Mary & Severt Kvamme - Arvada, CO
 David & Rise Lange - Champaign, IL

Tad & Angie McDonald - Wellington, CO
 Bryan McNair - Fort Collins, CO
 Derek & Christina Menke - Arvada, CO
 Gerry & Delores Mueller - Longmont, CO
 Gerry & Lois Olsen - Fort Collins, CO
 Rhett & Megan Osborne - Fort Collins, CO
 Elliott & Kathryn Pancoast - Llano, TX
 Bert & Marilyn Pedri - Fort Collins, CO
 Ally Plucheck - Fort Collins, CO
 Randall & Loretta Raile - Benkelman, NE
 Greg & Susan Schairer - Loveland, CO
 Jeff Schwartz - Loveland, CO
 Newton & Ann Seitzinger - Fort Collins, CO
 Doug & Kim Tabor - Loveland, CO
 Tim & Mary Verner - Kansas City, MO
 Kent Weisshaar - Burlington, CO
 Gene & Cheri Zeller - Loveland, CO
 Pete Behrens & Jana Zimmerman - Louisville, CO

Signal Mountain Donors (\$250 - \$500)

Dan and Debrah Austin - Windsor, CO
 Bob & Lorraine Baltrum - Genoa, IL
 David & Karen Barber - Loveland, CO
 Nathan & Liza Blom - Parker, CO
 Mike & Marie Crist-Fulk - Englewood, CO
 John & Kathleen Erickson - Boulder, CO
 Vince Erickson - McAllen, TX
 Pam & Jay Fairfax - Cape Coral, FL
 Jim & Sandi Fitzgerald - Boulder, CO
 Dave & Kathy Gies - Englewood, CO
 Nina Guthrie - Elizabeth, CO
 Karl & Lorna Heichelheim - Longmont, CO
 Laura Hiebenthal - Greeley, CO
 Denise Hoover - Woodstock, IL
 Peter & Joyce Jobson - Fort Collins, CO
 Doug & Laura Jones - Parker, CO
 Hans & Kathy Jorgensen - Loveland, CO
 Troy & Tracey Klammer - Fort Collins, CO
 Dawnine Larson-Meyer - Laramie, WY
 Craig Layman - Kansas City, MO
 Lynn & Kathy Loken - Loveland, CO
 Bruce & Peggy Lundebly - Fort Collins, CO
 Jordan & Johannah Madonna - Loveland, CO
 Jason & Monica McSpadden - Helena, MT
 Duane & Elsie Menken - Fort Morgan, CO
 Brian Meyer & Brenda Severson - Readlyn, IA
 Bob & Pat Mohrbacher - Lakewood, CO
 Chuck & Cinda Musgrave - Golden, CO
 Greg & Gwen Schaefer - Palo Alto, CA
 Andrew & Kelsey Schleusener Sprowell - Fort Collins, CO



FRIENDS OF THE MOUNTAIN CONTINUED

Darwin & Chris Schwartz - Greeley, CO
 Bob & Nena Steger - Denver, CO
 Melanie Swenson - Kalispell, MT
 Steve & Suzie Vuolo - Eden Prairie, MN
 Bev Williams - Estes Park, CO
 Sherman Bishop & Deborah Yandala - Westlake, OH
 Clark & Mim Zeddies - Batavia, IL

Mummy Pass Donors (\$100 - \$250)

Paul & Melissa Anderson - Fort Collins, CO
 Randy & Pam Bailey - Fort Collins, CO
 Erika & Andy Beahm - Windsor, CO
 Beverly Berardinelli - Albuquerque, NM
 Verne & Bev Berry - Longmont, CO
 Joel Buck-Gengler - Longmont, CO
 Mark & Laurie Churchill - Eden Prairie, MN
 Cristin Cole - Kissimmee, FL
 Dave & Ruth Ericson - Albuquerque, NM
 Kay Gillespie - Fort Collins, CO
 Mel & Mary Jo Haack - Loveland, CO
 Duane & Colleen Hanson - Fort Collins, CO
 Marion & Horace Hardy - Glen Mills, PA
 Ken & Letha Hummels - Greeley, CO
 Dave & Nell Jarvis - Canon City
 Stanley & Evelyn John - Denver, CO
 Brian & Sandy Korbel - Fargo, ND
 Craig Larson - Lakewood, CO

Why Give? God has entrusted a vibrant Gospel centered program and 117 acres of mountaintop creation to our care. For over 50 years Sky Ranch has been instrumental in the faith-formation for thousands of young people, giving them the moral and spiritual compass they need to develop into effective leaders in our world.

Fees charged for summer camping and retreating do not cover all of the operating costs. Sky Ranch intentionally keeps the fees low to accommodate all campers and congregations who wish to participate, regardless of economic circumstances. The remaining money for operating costs must be raised by Sky Ranch each year.

When you give to Sky Ranch, your gift supports high quality programs, facilities and staff. Your gift provides an interactive Christ centered experience that changes lives. Your gift helps to give campers a safe place to experience to "Encounter Christ on the Mountaintops."

Paul & Karen Leslie - Grand Rapids, MN
 Chris & Elizabeth Madgwick - Waldo, WI
 Jonathan & Chris Marston - Fort Collins, CO
 Jeffrey Meador - Colorado Springs, CO
 Howard & Sonia Nornes - Fort Collins, CO
 Ron & Leanne Ommen - Pequot Lakes, MN
 Joel & Sonja Pancoast - Loveland, CO
 David Pestalozzi - Boulder, CO
 Lynn Poppen - Sidney, NE
 Leroy & Mary Preston - Thorton, CO
 Paul & Deborah Price - Loveland, CO
 Kevin & Robin Rein - Littleton, CO
 Eric & Jessica Rhyner - St Louis Park, MN

Eldene Ronnekamp - Denver, CO
 Ron Roschke - Denver, CO
 Julie & Eric Schranck - Castle Rock, CO
 Mike & Sharon Simonds - Greeley, CO
 Jon & Adrienne Smela - Loveland, CO
 Tom Smith - St Paul, MN
 John Sterner - Loveland, CO
 Vicki Volbrecht - Fort Collins, CO
 LaVarr & Dean von Holdt - Lakewood, CO
 Jim Vosberg - Loveland, CO
 Christopher Watson - Berthoud, CO
 Alan & Carolyn Wiechmann - Parker, CO
 Cory & Jamie Wolff - Longmont, CO

FRIENDS OF SKY RANCH – GIFTS IN 2014

Sky Ranch Lutheran Camp exists because of the generous gifts of time, talents and treasures of over five decades of camp friends. **Friends of Sky Ranch** are those individuals who support the camp with gifts of up to \$100 during the year. Thanks for giving ... the gift of Camp!

Al & Donna Abbott - Joliet, IL
 Howard & Diana Abraham - Loveland, CO
 Greta & Mark Abramski - Longmont, CO
 Shila & Ben Adolf - Bethune, CO
 Patti Albrandt - Greeley, CO
 Ricky & Angie Allison - Loveland, CO
 Mark & Kelly Almer - Littleton, CO
 Gene & Linda Alvine - Loveland, CO
 Beth Aly - Boulder, CO
 BA Anderson - Fort Collins, CO
 Robert & Brenda Anderson - Harris, MN
 Donald & Janet Anderson - Austin, TX
 Duane and Jodi Anderson - Greeley, CO
 James Anderson - Fort Collins, CO
 Andy & Kay Andrew - Grand Prairie, TX
 Bruce & Virginia Appel - Longmont, CO
 Sybil Arns - Loveland, CO
 Kayla Aspeslagh - Westminster, CO
 Richard & Shelley Aust - Fort Collins, CO
 Erin Bachman - Loveland, CO
 Cliff and Carol Bartlett - Whitney, TX
 Elwyn Batchelor - Denver, CO
 Fred & Sherri Bauer - Eaton, CO

Dan and Cheryl Baxter - Cheyenne, WY
 Rita Bennett - Fort Collins, CO
 Tom & Kimberlee Bennett - Holyoke, CO
 Robert & Mary Jane Berg - Conifer, CO
 Bruce & Andrea Berquist - Fort Collins, CO
 Wayne & Sharroll Benahl - Fort Morgan, CO
 Tom & Lydia Berrong - Angel Fire, NM
 Jeff & Kristy Bibbey - Laporte, CO
 Eric & Carol Biedermann - Fort Collins, CO
 Rick & Sandy Bilstad - Loveland, CO
 John & Carol Bisbee - Fort Collins, CO
 Joanne Blackwell - Aurora, CO
 Werner & Suzanne Boos - Littleton, CO
 Darlene Borgmann - Longmont, CO
 Yulonda Sue & Phillip Braband - Greeley, CO
 Wilfred Brake - Fort Collins, CO
 Gus & Josie Brockman - Longmont, CO
 Harold Brokering - Windsor, CO
 Peggy Brown Bengtson - Glendo, WY
 John & Chris Buller - Hesston, KS
 Paul & Suzanne Bunker - Littleton, CO
 Frances & Morris Burns - Denver, CO
 Shirley Carlisle - Loveland, CO

Jeff & Patricia Carlson - Aurora, CO
 Verl & Carolyn Carlson - Johnston, CO
 Jeanell Carlson-Bjorkman - Colorado Springs, CO
 Laura Cauley - San Antonio, TX
 Adam Center - Fort Collins, CO
 Donna Cleveland - Centennial, CO
 Bonnie Cochran - Fort Collins, CO
 Michael & Linda Coe - Highlands Ranch, CO
 Doug & Diana Collins - Fort Collins, CO
 Kevin Cox - Chesterfield, MO
 Marlene Craig - Grand Junction, CO
 CJ Cress - Denver, CO
 Howard & Lou Ann DeLozier - Fort Collins, CO
 Michael Devereaux - Fort Collins, CO
 John Drege - Fort Collins, CO
 Carol Dreier - Denver, CO
 John & Vicki Eisele - Fort Collins, CO
 Jaci & Wesley Engel Melander - Loveland, CO
 Jack & Kathy Enyeart - Loveland, CO
 Patricia Fagler - Longmont, CO
 Carolyn Figal - Windsor, CO
 Paula Flagel - Fort Collins, CO
 Judy Fletcher - Fort Collins, CO

FRIENDS OF SKY RANCH CONTINUED

Greg & Dianne Forge - Highlands Ranch, CO
 Jon & Brenda Fosse - Fort Collins, CO
 Daniel & Lisa Fox - Straton, NE
 Philip Freeman - Decorah, IA
 Jim & Margaret Frye - Fort Collins, CO
 Leroy & Arlene Gabriel - Loveland, CO
 Cynamon Garrott - Greeley, CO
 Jason & Michelle Gentry - Windsor, CO
 Amy Giles - Littleton, CO
 Milbern Goetz - Greeley, CO
 Walter or Jo Ann Gollwitzer - Fort Collins, CO
 Bob & Marilyn Greason - Littleton, CO
 Dale & Lou Grit - Fort Collins, CO
 Claire Haberkorn - Fort Collins, CO
 Curtis & Marjorie Halvorson - Fort Collins, CO
 Uta Hanna - Denver, CO
 Dave & Elaine Hart - Berthoud, CO
 Bruce and Gail Henderson - Atlantic, IA
 SJ Henning - Fort Collins, CO
 Royce & Donna Henry - Greeley, CO
 Alfred & Marilyn Hinrichsen - Loveland, CO
 Jay & Kim Hohensee - Broomfield, CO
 Chris & Eunice Holthusen - Loveland, CO
 Kevin & Tina Homstad - Plymouth, MN
 Vic & Lois Hoops - Arvada, CO
 Virginia Horst - Loveland, CO
 Larry & Eileen Huddle - Loveland, CO
 Marvin & Trudie Huth - San Antonio, TX
 Nancy Jack - Loveland, CO
 Brian & Jennifer Jacobson - Des Moines, WA
 Bill & Carol Jeffers - San Tan Valley, AZ
 Don & Marge Jensen - Fort Morgan, CO
 George & Karen Jensen - Rochester, MN
 Clifford & Carol Johnson - Littleton, CO
 Karen & Dave Johnson - Petaluma, CA
 Steve & Mayme Johnson - Cottage Grove, MN
 Nina Joy - New Hope, MN
 Lois Jurgens - Loveland, CO
 Karla Kalahar - Littleton, CO
 Elmer & Dorothy Kellner - St Francis, KS
 David & Beverly Kenik - Buffalo, WY
 Dick and Kate Kling - Loveland, CO
 Art & Suzanne Klinzmann - Fort Collins, CO
 Rachel & Scott Konda-Sundheim - Loveland, CO
 Kumi Kono - Fort Collins, CO
 Jere & Jan Krakow - Albuquerque, NM
 Gary & Barb Kuxhaus - Centennial, CO
 Robert Lageman - Highlands Ranch, CO
 Jim & Georgia Lee Laird - Aurora, CO
 Alena Lamirato - Buffalo, WY
 Tom & Cindy Langan - Centennial, CO
 Jean Larson - Longmont, CO
 Jedd & Annika Larson - St Anthony, MN
 Barbara Lauer - Greeley, CO
 Jamie Lawson - Loveland, CO
 Gwen & Russ Leffler - Eaton, CO
 Tim & Kris Lenczycki - Fort Collins, CO

Jean Leritz - Centennial, CO
 Kelly Lewis - Greeley, CO
 Jane Lichtfuss - Loveland, CO
 Korra Looschen - Greeley, CO
 John & Mary Ann Lundgren - Boulder, CO
 Don & Resa Mai - Loveland, CO
 Bob & Kathy Majeski - Loveland, OC
 Linda Mallory - Loveland, CO
 Bob & Cathy Mansbridge - Westminster, CO
 William & Elizabeth Markham - Berthoud, CO
 Carrie Martin - Loveland, CO
 Clifton & Jean McCalla - Fort Collins, CO
 Bill & Linda McCann - Loveland, CO
 John & Rhonda McCaughey - Loveland, CO
 Anthony McColl - Loveland, CO
 Karin McDonald - Rogers, MN
 Charles & Janice Mihulka - Greeley, CO
 Mindy Miller - Greeley, CO
 Paul & Beth Mittermaier - Germantown, WI
 Robert & Jannette Monson - Loveland, CO
 Robyn & Scottie Moore - Fort Collins, CO
 Barbara Morgan - Loveland, CO
 Chuck Newell - Aurora, CO
 Ryan & Sarah Normandin - Longmont, CO
 Susan OGrady - Fort Collins, CO
 Kevin & Sandra Ohlson - La Salle, CO
 Mike & Chris Olsen - Castle Rock, CO
 Dan & Kari Olsen - Fort Collins, CO
 Paul Olsen - Arvada, CO
 Thomas & Beth Olson - Omaha, NE
 Jon & Mary Palomaki - East Moline, IL
 Russ & LaVerne Pemberton - Thornton, OC
 Ian & Cynthia Percy - Greeley, CO
 Erik & Renne Perschau - Fort Collins, CO
 Dean & Glenis Petersen - Golden, CO
 Ruth Peterson - Lakewood, CO
 Carrie Pierick - Longmont, CO
 Terry & Diana Precht - Loveland, CO
 Rodger & Claudia Price - Fort Collins, CO
 Lois Prickett - Cheyenne, WY
 Mike & Linda Pubentz - Ottawa, IL
 Karen Rank - Longmont, CO
 Joe & Jackie Rapp - Centennial, CO
 Mike & Stacy Rea - Cheyenne, WY
 Mark & Kristin Reese - Fort Collins, CO
 Kathryn Regan - Aurora, CO
 Lon & Carol Robideaux - Parker, CO
 Verne & Jean Roenfeldt - Aurora, CO
 Garth & Joanne Rogers - Fort Collins, CO
 Richard & Lavon Rohrig - Aurora, CO
 Velma Rothe - Greeley, CO
 Dominic & Karin Ruffatto - Fort Collins, CO
 Steve & Jade Santoro - Morrison, CO
 Carl & Pam Schaal - Longmont, CO
 Roger & Tina Schiele - West Jordan, UT
 Glenn & Jean Schmidt - Fort Collins, CO
 Barney & Barb Schranck - Lakewood, CO
 John & Sally Schroeder - Fort Collins, CO
 Edward Schroeder - Loveland, CO

Marty & Carolyn Schultz - Loveland, CO
 Dana Lynn Schwartz - Loveland, CO
 Jason & Brandee Schwartz - Huron, SD
 John & Peggy Sellers - Lakewood, CO
 Hal & Kay Seppala - Chassell, MI
 Becca Simonds - Greeley, CO
 Norman & Erma Skadburg - Fort Collins, CO
 Richard & Kim Skatula - Casper, WY
 Ed & Cheryl Smith - Loveland, CO
 Mark & Lorie Smith - Loveland, CO
 Bud & Katie Sorensen - Greeley, CO
 Ron & Marilyn Stember - Denver, CO
 Heather Strayer - Green Bay, WI
 Andrew & Joan Stremmel - Brookings SD
 Arlyn & Biruta Strike - Dekalb, IL
 Kelly & Jonelle Strong - Fort Collins, CO
 Martha Sullins - Fort Collins, CO
 Jim Swinehart - Denver, CO
 Angela Tanner - Highlands Ranch, CO
 Michael & Linda Tegeder - Windsor, CO
 Paul & Sandra Tunesvick - Loveland, CO
 Tom & Tina Vander Stel - Centennial, CO
 Lindsey & Stephanie Vanderheiden - Longmont, CO
 Greta von Bernuth - Longmont, CO
 Jim & Helen Waag - Fort Collins, CO
 Harold Walker - Denver, CO
 Greg Waltz - Parker, CO
 Judith Wathen - Fort Collins, CO
 Don & LaVay Weinmeister - Windsor, CO
 Charles Weishaupt - Greeley, CO
 Duane & Karen Westerman - Alamo Heights, TX
 Cindy White - Louisville, CO
 Craig & Julie Wilson - Loveland, CO
 Grant & Mev Winter - Cook, MN
 Kaitlin Winter-Eulberg - Berkeley, CA
 Stephanie & William Wisniewski - Johnstown, CO
 Bill & Sally Withers - Fort Collins, CO
 Laura Wouters - Los Alamos, NM
 Curtis & Jen Zachman - Fort Collins, CO
 Amy & Jason Zidek - Houston, TX
 Phyllis Zimmerman - Loveland, CO

VOLUNTEER NURSES

| | |
|--------------------|-------------------|
| Jane Arndt | Tiffany Jorgensen |
| Sarah Bailey | Katie Kaufman |
| Elaine Beckman | Carol McManus |
| Ann Burkett | Kirk Simon |
| Pauline Farrow | Erin Sprain |
| Lori Johnson-Berke | Wendy Wagner |
| Vicki Johnson | |

We apologize for any errors or omissions in our giving categories. If you notice any discrepancies or prefer to be listed in a certain way, please notify the camp office at 970-493-5258.

MEMORIAL GIFTS

ELLEN CLAIBORNE

Ken Claiborne

PHYLLIS CLEELAND

Marion & Horace Hardy

GREG GALYATH

Brad & Deb Abbott
 Andy & Kay Andrew
 Elwyn Batchelor
 Robert & Mary Jane Berg
 Joanne Blackwell
 Donna Cleveland
 CJ Cress
 Mike & Marie Crist-Fulk
 Carole Dreier
 Bob & Marilyn Greason
 Uta Hanna
 Gary & Barb Kuxhaus
 Tom & Cindy Langan
 Ally Plucheck
 Joe & Jackie Rapp
 Kathryn Regan
 Tom Smith

MYRNA BEA HILL

Brad & Deb Abbott
 Marion & Horace Hardy

MICHAEL KALAN

Wendy Kalan

MEMORIAL

Kevin Cox

SARAH SCHWARTZ

Howard & Diana Abraham
 Patti Albrandt
 Gene & Linda Alvine
 James Anderson
 Paul & Melissa Anderson
 Erin Bachman
 Tom & Lydia Berrong
 Rick & Sandy Bilstad
 Wilfred Brake
 Frances & Morris Burns
 Shirley Carlisle
 Adam Center
 Bonnie Cochran
 Jaci & Wesley Engel Melander
 Charles & Marthann Dahlen
 Jack & Kathy Enyeart
 Leroy & Arlene Gabriel
 Dale & Lou Grit
 Mel & Mary Jo Haack
 Dave & Elaine Hart
 SJ Henning

Marilyn Hinrichsen
 Chris & Eunice Holthusen
 Virginia Horst
 Larry & Eileen Huddle
 Nancy Jack
 Terry & Vicki Johnson
 Lois Jurgens
 Kumi Kono
 Barbara Lauer
 Kelly Lewis
 Jane Lichtfuss
 Lynn & Kathy Loken
 Bob & Kathy Majeski
 Linda Mallory
 William & Elizabeth Markham
 Carrie Martin
 Bill & Linda McCann
 John & Rhonda McCaughey
 Anthony McColl
 Mindy Miller
 Robert & Jannette Monson
 Terry & Diana Precht
 Paul & Deborah Price
 Rodger & Claudia Price
 Karen Rank
 Dominic & Karin Ruffatto
 Dana Lynn Schwartz
 Darwin & Chris Schwartz
 Jason & Brandee Schwartz
 Jeff Schwartz
 Mark & Lorie Smith
 Scott & Ruth Sprain
 John Sterner
 Michael & Linda Tegeder
 Paul & Sandra Tunesvick
 Richard & Carol Ward
 Judith Wathen
 Craig & Julie Wilson
 Stephanie & William Wisniewski

KIRK STRAWSER

Pam Strawser

JIM WALLEN

Bob & Elaine Beckman

RON ZIMMERMAN

Phyllis Zimmerman

REV FRANK H REISINGER III SEMINARY STAFF ENDOWMENT FUND

Christ the King Lutheran Church – Denver, CO
 Frank & Sarah Hester – Arlington, TN
 David Holen – Denver, CO
 Scot & Heather Reisinger – Cedar Rapids, IA



ORGANIZATIONS

Ace Hardware
 Amazon Smile Foundation
 Bethany Be the Blessing - Cherry Hills Vil, CO
 Christ the Servant 5th Graders - Louisville, CO
 Colorado Iron & Metal - Fort Collins, CO
 Estate of Maxine Johnson
 Faith Community Church Outreach Grant
 Award - Longmont, CO-
 First English Lutheran Church Women's
 Group - Kimball, NE
 Longmont Ford - Longmont, CO
 Milwaukee Tool - Brookfield, WI
 Oskar Blues Can'd Aid Foundation -
 Longmont, CO
 Rocky Mountain Synod ELCA
 The Community Foundation of Boulder
 County: Rebuilding Lyons Fund Grant -
 Lyons, CO
 Thrivent Choice
 Thrivent Employee Giving Campaign
 Thrivent Employee Giving Campaign Matching
 Funds

GIFT IN KIND

Brad & Deb Abbott - Fort Collins, CO
 Ace Hardware
 Bob & Elaine Beckman - Fort Collins, CO
 John & Carol Bisbee - Fort Collins, CO
 Steve & Lillie Denny - Red Feather Lake, CO
 Bill & Pauline Farrow - Boulder, CO
 Kent & Susan Flack - Loveland, CO
 Keith Foster - Fort Collins, CO
 Sandy Galyath - Centennial, CO
 Kent Garvin - Fort Collins, CO
 Longmont Ford - Longmont, CO
 Milwaukee Tool - Brookfield, WI
 Ryan & Sarah Normandin - Longmont, CO
 Ally Plucheck - Fort Collins, CO
 Spirit of Joy Lutheran Church - Fort Collins, CO
 Andy & Erin Sprain - Fort Collins, CO
 Scott & Ruth Sprain - Loveland, CO
 Joel & Tina Vosberg - Bellvue, CO

SKY RANCH LUTHERAN CAMP ASSOCIATION

Web Address: www.SkyRanchColorado.org

Office Address: 805 S Shields St
Fort Collins, CO 80521

Camp Address: 1601 N County Rd 163CG
Bellvue, CO 80512

Office Phone: 970-493-5258

Camp Phone: 970-881-2113

SKY RANCH FULL TIME STAFF

| | | |
|--------------------|------------------|------------------------------|
| Executive Director | Brad Abbott | Brad@skyranchcolorado.org |
| Associate Director | Andy Sprain | Andy@skyranchcolorado.org |
| Program Director | Kathryn Seyfarth | Kathryn@skyranchcolorado.org |
| Office Manager | Ally Pluchek | Ally@skyranchcolorado.org |

2014 OFFICERS OF THE BOARD OF DIRECTORS

| | | | |
|----------------|---------------------|--------------------|------------------|
| President | *Rob Behrens | Our Saviour's | Fort Collins, CO |
| Vice President | Gene Elder | Zion Lutheran | Loveland, CO |
| Secretary | Dss Kristen Baltrum | Bethlehem Lutheran | Longmont, CO |
| Treasurer | RC Reiman | Ascension Lutheran | Cheyenne, WY |

2014 BOARD OF DIRECTORS MEMBERS

| | | |
|----------------------|-------------------------------|--------------------------|
| Pr. Meghan Aelabouni | Trinity Lutheran | Fort Collins, CO |
| Pr. Ron Bochhaus | Shepherd of the Mountain | Estes Park, CO |
| *Kevin Dragseth | Bethany Lutheran | Cherry Hills Village, CO |
| Kim Haugestuen | Spirit of Joy Lutheran | Fort Collins, CO |
| *Jeff Kelty | Joy Lutheran | Parker, CO |
| Angie McDonald | Our Savior's Lutheran | Fort Collins, CO |
| Jeff Snauwaert | Christ Lutheran | Highlands Ranch, CO |
| Michael Weier | Lutheran Church of the Master | Lakewood, CO |
| Pr. Ron Roschke | Rocky Mountain Synod Liaison | Denver |

*Denotes Outgoing Board member

| | |
|---|--------------------------------------|
| Chair for the 50th Anniversary Special Appeal | |
| Kent Garvin | Trinity Lutheran Fort Collins, CO |

| | |
|---|--|
| Chair for the Rev. Frank H. Reisinger III Seminary Staff Endowment Fund | |
| Mike Williams | Christ Lutheran Highlands Ranch, CO |

| | | |
|--|------------------------|--------------|
| New Board of Director Members for 2015 | | |
| Pr. Ruth Ann Loughry | King of Glory Lutheran | Loveland, CO |
| Kim Kelty | Joy Lutheran | Parker, CO |